

“Safe Travels”

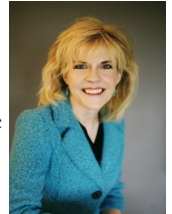
March 2017

Letter from the Executive Director

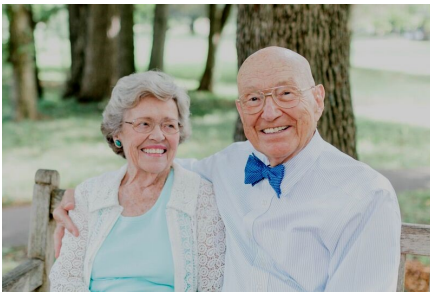
February was a record month for us — we delivered 969 rides, more than our previous record of 959 rides back in October 2014! February is a short month, so if the usual 30 days, we would have surpassed 1,000 rides!

I sound like a broken record, but we really need additional volunteer drivers to handle this wonderful increase in rides. Even two or three rides a week would help us tremendously. Drive on your schedule and earn mileage credit for every mile you drive! Please call me at 859-351-0460 to find out more or to schedule a training.

At this time, we are holding new member-rider applications until we feel confident that we have the capacity to handle these newest riders. We really appreciate your trust in us and don't want our customer service to slip for existing riders. It was a hard decision — and unprecedented — but one we thought best to make. *Laura*



Laura Dake



Madge and Don Chesnut use ITNBluegrass every week to go to the grocery store and get some exercise at the downtown YMCA. The two grew up in the close-knit community of London, KY in the 1930s. In 1945, just before World War II ended, seventeen-year-old Don enlisted in the navy and shortly after returned home and married his high school sweetheart Madge. The two attended school in Georgetown, where Don completed a bachelor's degree in sociology and psychology. They then returned to London where Don went to work in the wholesale grocery business. Madge was a full-time homemaker raising two boys and two girls and volunteering with the local PTA and Girl Scouts.

The Chesnuts moved to Lexington a few years ago to be closer to their children (all of whom live in Lexington), grandchildren, and great-grandchildren. They love books, taking walks, cooking, adventurous cuisine, and travelling. Don has been to nearly every continent to pursue his love of bird hunting. One of their more memorable adventures is when they accompanied their geologist son to a remote village in China, where they enjoyed experiencing the local culture.

"We've been married for seventy years," Don said. "We are deeply in love with each other, and we're in love with ITN! It's a great service and we appreciate it so much." While we're sure ITN is no match for Madge, we appreciate the sentiment! The Chesnuts are such a wonderful couple and a real pleasure to drive.

Welcome to our newest volunteer drivers, *Will Sowers and Keli Thompson!*

WHERE DO WE GO? OUR TOP 10* DESTINATIONS IN FEBRUARY!

1. Brookdale Senior Living (Richmond Place)
2. Hanover Towers
3. Senior Citizens Center
4. Lexington Country Place
5. R&P Industrial Chimneys
6. Crestwood Christian Church
7. Renal Care Group
8. Saint Joseph Hospital
9. Tates Creek Centre
10. Park Place Apartments

*Not including private residences

Grateful thanks to our most recent donors

(Feb. 8 — Mar. 7, 2017):

Joe & Chandra Jarboe	Anne O'Brien
Frank & Susan Lewis	Len & Lillian Press
Alberto Mazzoleni	Donald & Nora Putnam
Patrick & Beverley McLaughlin	

February Facts

Total Members by February 28:	545
(not all are riders)	
Total Rides in February:	969
Total Rides to Date (Sept. 1, 2008–Feb. 28, 2017):	62,054

1206 N. Limestone Street, Lexington, KY 40505

Tel: 859.252.8665 FAX: 859.252.4393

www.itnbluegrass.org